



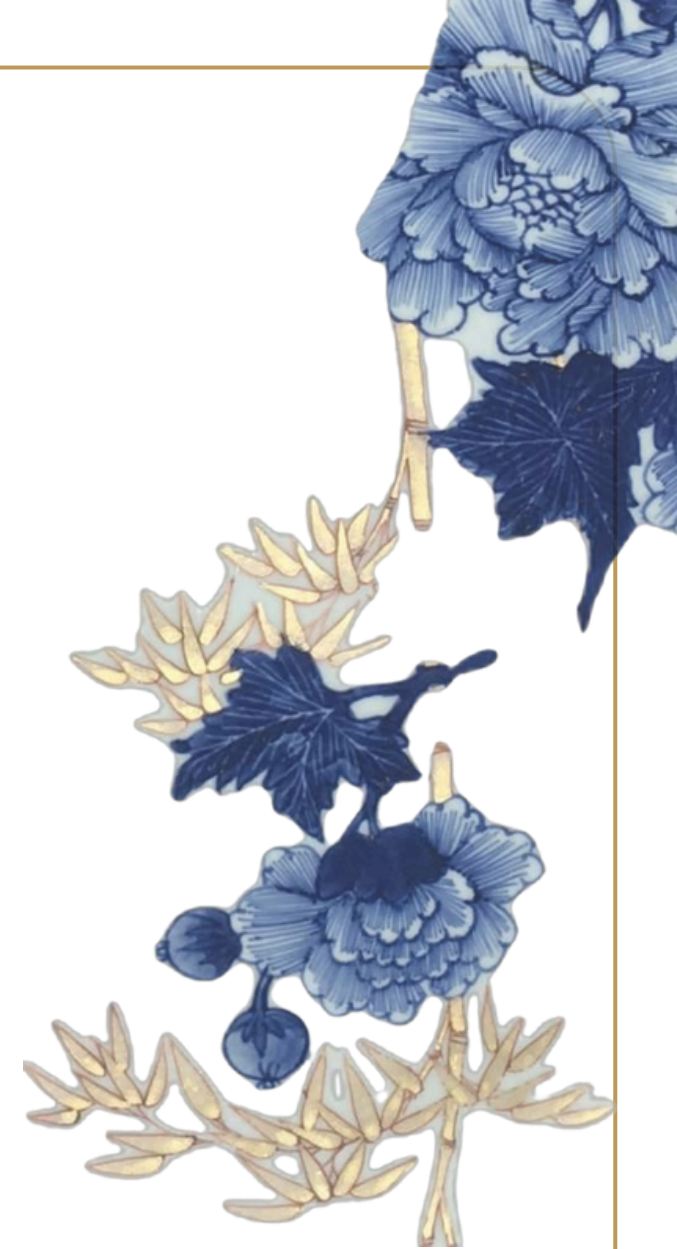
fragments of GRACE

*kintsugi inspired womenswear collection,
where artful gold meets Japanese elegance*

the CONCEPT

In a world that cherishes both tradition and transformation, “Fragments of Grace” emerges as a women’s Indowestern collection reflecting the poignant philosophy of Japanese Kintsugi—the art of mending broken pottery with gold, celebrating beauty found in imperfection and renewal.

This collection finds its heart in the tranquil blues and pristine whites of ombre-dyed fabrics, evoking the serenity of porcelain and the contemplative depth of Japanese ceramic artistry. Gold sequin and aari embroideries mimic the gleaming lines that unite fractured surfaces, while foil and digital prints draw from ethereal Japanese motifs—waves, cranes, sakura blossoms, and subtle brushstrokes—translating centuries of artistic heritage onto contemporary silhouettes.



the COLLECTION



*Majesty
Co-Ord Set*



*Azure Mend Kintsugi
Dress*



*Golden Thread
Serenity Set*



*Mended Muse
Set*



*Celestial
Ombre Dress*



*Harmony
Lines Tunic*

the COLLECTION



*Glint of Grace
Dress*



*Verdant Vein
Kintsugi Dress*



*Lotus Gild
Co-Ord Set*



*Lotus Lineage
Ensemble*



*Goldleaf Renewal
Dress*



*Opulent Flow
Co-Ord*



INSPIRATION



using the image, take inspiration and generate a fabric swatch with white and blue prints, along with some gold zari embroidery. it should reflect the inspiration image

SWATCH



use the uploaded swatch to render the dress on the woman, *ref silhouette input provided*

take inspiration from uploaded reference swatch image and render the top and pants on the model in same fabric, maintain silk fabric texture of the garment *ref silhouette input provided*

GARMENTS



INSPIRATION



SWATCH



create a fabric swatch from this image in a swatch format. it will have embroidery same as image in some areas

use the uploaded swatch to render the shirt of the model, fabric should be satin, on top of which gold sequin embroidery is there
ref silhouette input provided

use the uploaded swatch with embroidery to render the skirt and top of the model
ref silhouette input provided

GARMENTS



INSPIRATION



use the uploaded image as inspiration to create a fabric swatch which is ombre dyed along with gold mending embroidery, fabric should be linen

SWATCH



use the uploaded fabric swatch to render the dress, dress color should be navy and white ombre dyed, place the gold embroidery on shoulder, change buttons to golden engraved buttons, fabric of dress should be linen

ref silhouette input provided

take inspiration from ref image uploaded and render the kaftan in similar fabric color and motifs, fabric texture should be cotton linen, color ombre dyed look, make the embroidery only on sleeves

ref silhouette input provided

GARMENTS



INSPIRATION



create a fabric swatch in the
using the uploaded image for
inspiration

SWATCH



use the uploaded fabric swatch to
render the dress, fabric of dress
should be cotton linen
ref silhouette input provided

take inspiration from ref swatch uploaded
and render the dress in similar fabric color
and motifs, fabric texture should be cotton
linen, add a antique gold thin belt on waist
ref silhouette input provided

GARMENTS



INSPIRATION



create a digitally printed fabric swatch using the image, add some golden foil print in some areas, base should be navy blue

SWATCH



use the uploaded fabric swatch to render the co-ord set on model, do not change print or texture of fabric swatch, flowers should be in gold foil print, base fabric color to be greyish blue
ref silhouette input provided



GARMENTS

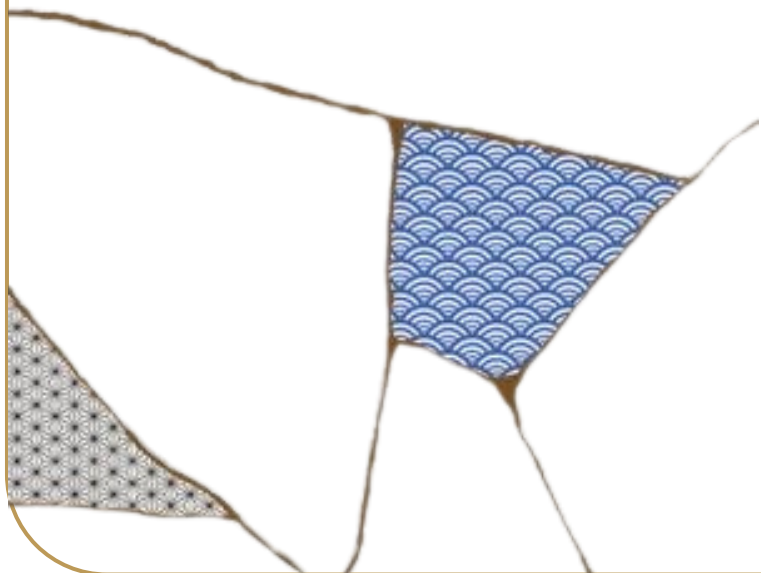
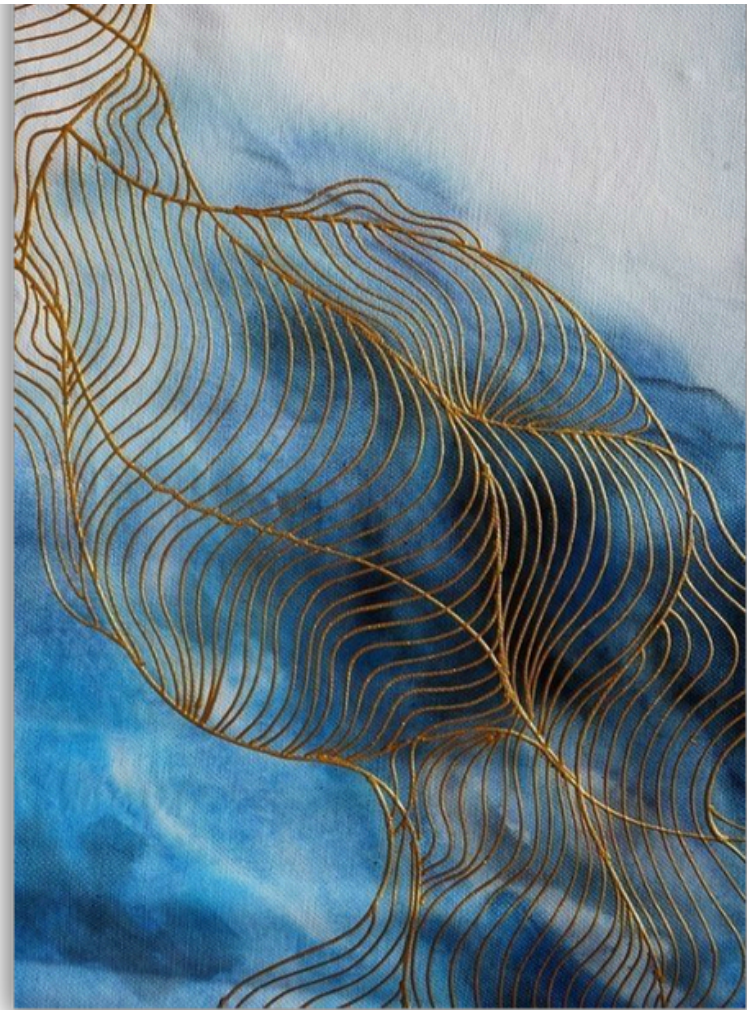
take inspiration from ref swatch image uploaded and render the co-ord set in similar fabric color and motifs, put leaves only on top
ref silhouette input provided



use ref swatch image as inspiration to render the dress, golden leaves will only be at bottom, make it a ombre dress
ref silhouette input provided



INSPIRATION



GARMENT

use the uploaded swatch (image 1)
with embroidery to render the skirt of
the model, use uploaded swatch
(image 2) render top of model.
ref silhouette input provided



thank
YOU

*swatches, designs and AI
model renders created using
Streamoid's AI tools*



Streamoid